

Reunión ordinaria GT- IDEE

Madrid, 25 de febrero del 2010



Propuesta de creación de un subgrupo de trabajo: “PATRIMONIO HISTÓRICO”

Isabel del Bosque González ⁽¹⁾ Juan M. Vicent García ⁽²⁾

⁽¹⁾ *Unidad de SIG*

⁽²⁾ *Instituto de Historia*

Consejo Superior de Investigaciones Científicas (CSIC)

1. Contextualización



INSPIRE
Infrastructure for Spatial Information in Europe

D2.8.1.9 INSPIRE Data Specification on Protected Sites – Guidelines

Title	D2.8.1.9 INSPIRE Data Specification on <i>Protected sites</i> – Guidelines
Creator	INSPIRE Thematic Working Group <i>Protected sites</i>
Date	2009-09-07
Subject	INSPIRE Data Specification for the spatial data theme <i>Protected sites</i>
Publisher	INSPIRE Thematic Working Group <i>Protected sites</i>
Type	Text
Description	This document describes the INSPIRE Data Specification for the spatial data theme <i>Protected sites</i>
Contributor	Members of the INSPIRE Thematic Working Group <i>Protected sites</i>
Format	Portable Document Format (PDF)
Source	
Rights	Public
Identifier	INSPIRE_DataSpecification_PS_v3.0.pdf
Language	En
Relation	Directive 2007/2/EC of the European Parliament and of the Council of 14 March 2007 establishing an Infrastructure for Spatial Information in the European Community (INSPIRE)
Coverage	Project duration

The screenshot shows the INSPIRE website interface. At the top right is the INSPIRE logo and navigation links for 'Print' and 'font size'. Below the logo is a search bar with the text 'SEARCH INSPIRE' and a search button. To the right of the search bar is a 'LOGIN / REGISTRATION' section with a welcome message and links for 'Website and documents', 'Website only', and 'OK'. Below the search bar is a calendar for 'Feb 2010' with a grid of days. At the bottom right is a 'NEWS' section with a list of recent news items, including '25-Jan-10 INSPIRE Annex II+III themes user requirements survey', '18-Jan-10 An updated version of the Guidelines for Monitoring and Reporting has been published', and '15-Jan-10 Reminder: 1st Feb 2010: Deadline for submission of papers for...'. The main content area displays a news article titled 'Development of INSPIRE Data Specifications for Annex II and III' with a sub-header 'Development of INSPIRE Data Specifications for Annex II and III'. The article text is partially visible, mentioning 'SDICs and Legally Mandated Organisations (LMOs)', 'The Commission is seeking experts (domain experts, Facilitators, Editors) for the Thematic Working Groups (TWGs) and Publications.', and 'The Commission is currently responding to this call.' The article also mentions 'The Commission is currently responding to this call.' and 'The Commission is currently responding to this call.'

1. Contextualización

Theme *Protected sites* is included in Annex I, which means that it is considered as reference data, i.e. data that constitute the spatial frame for linking and/or pointing at other information that belongs to other thematic fields. There are strong interdependencies between this and some Themes listed in

The INSPIRE Directive defines a Protected Site as an “Area designated or managed within a framework of international, Community and Member States’ legislation to achieve specific conservation objectives” [Directive 2007/2/EC]. According to the International Union for the

Within the INSPIRE context, Protected Sites may be located in terrestrial, aquatic and/or marine environments, and may be under either public or private ownership. They may include localities with protection targets defined by different sectors and based on different objectives. Objectives for protection may include: the conservation of nature; the protection and maintenance of biological diversity and of natural resources and the protection of person-made objects including buildings, pre-historic and historic archaeological sites, other cultural objects, or sites with specific geological,

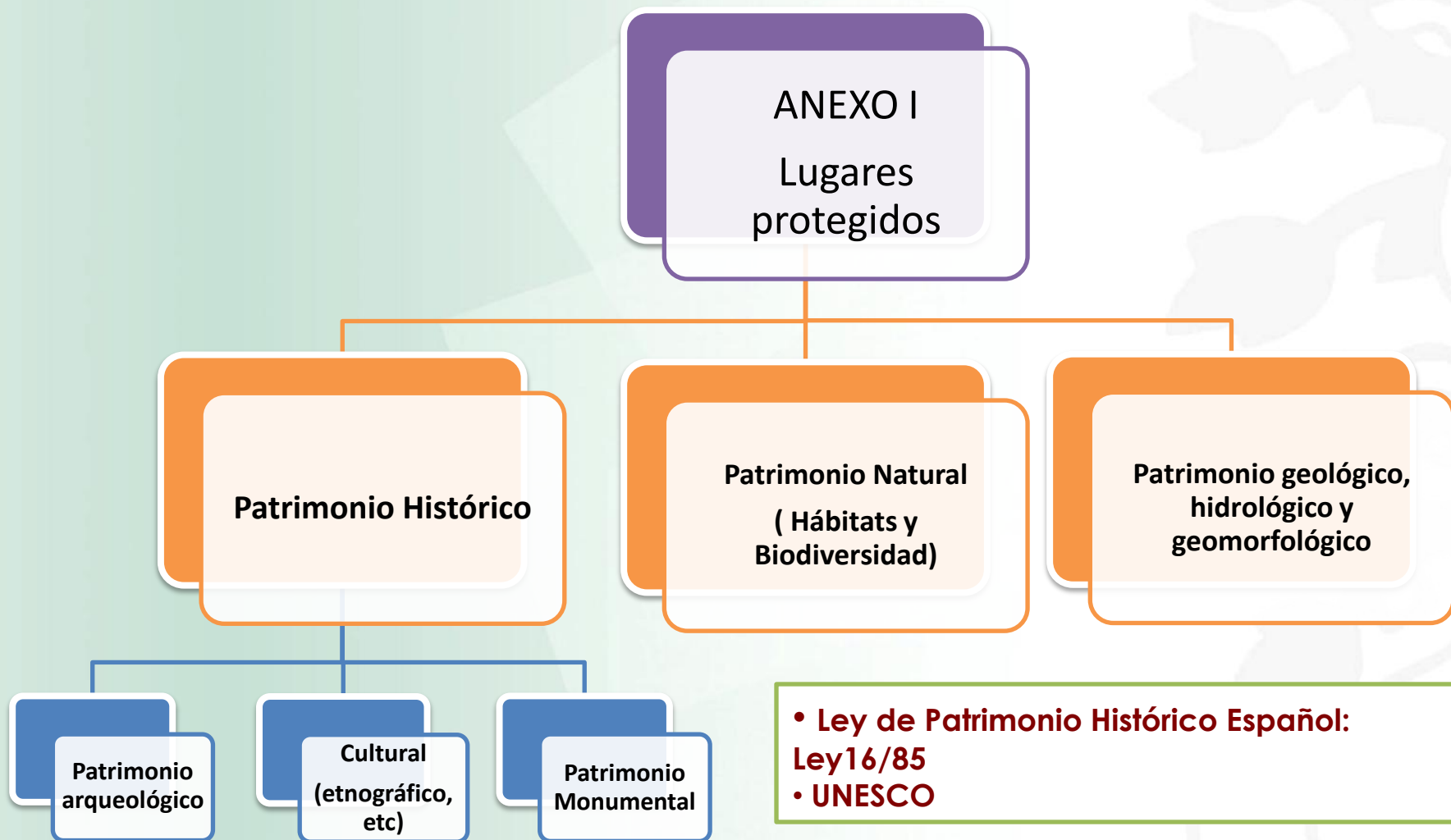
1. Contextualización

Protected sites may differ greatly in their reasons for protection, their designation and their management. Examples of legislation under which Protected Sites included in this INSPIRE theme are designated, managed and regulated include:

- the Habitats Directive (1992) (Directive 92/43/EC);
- the Birds Directive (1979) (Directive 79/409/EC);
- the Water Framework Directive (2000) (Directive 2000/60/EEC)
- the World Heritage Convention (1975);
- the Ramsar Convention (1971);
- the Barcelona Convention (1976);
- the Helsinki Convention (1974);
- the OSPAR Convention (1992) and
- the national laws of each European country and EU and international sector policies (for example, relating to nature conservation, forests or fisheries).

Thematic Scope	<p>The thematic scope of the INSPIRE data specification on <i>Protected sites</i> is defined on the basis of two criteria:</p> <ul style="list-style-type: none"> • The protection of the Site must be defined by legislation (whether international, European Community or national) and • The protection of the Site must be for specific conservation objectives, whether nature, cultural or other conservation. <p>In contrast, the closely related <i>AREA MANAGEMENT/RESTRICTION/REGULATION ZONES AND REPORTING UNITS</i> theme (from Annex III of the INSPIRE Directive) is concerned with areas that are designated for other purposes, or with non-legislative administrative mechanisms. Refer to [DS-D2.3] for more details.</p> <p style="text-align: center;">Table 2a – Examples of Protected Site exclusions and inclusions</p> <table border="1" style="width: 100%;"> <thead> <tr> <th style="text-align: center;">In this theme</th> <th style="text-align: center;">Not in this theme</th> </tr> </thead> <tbody> <tr> <td style="vertical-align: top;"> <ul style="list-style-type: none"> • protected archaeological sites; • protected buildings; • salmonid and cyprinid waters (Fresh </td> <td style="vertical-align: top;"> <ul style="list-style-type: none"> • restricted areas around drinking water sources (Water Framework Directive); </td> </tr> </tbody> </table>	In this theme	Not in this theme	<ul style="list-style-type: none"> • protected archaeological sites; • protected buildings; • salmonid and cyprinid waters (Fresh 	<ul style="list-style-type: none"> • restricted areas around drinking water sources (Water Framework Directive);
In this theme	Not in this theme				
<ul style="list-style-type: none"> • protected archaeological sites; • protected buildings; • salmonid and cyprinid waters (Fresh 	<ul style="list-style-type: none"> • restricted areas around drinking water sources (Water Framework Directive); 				

2. Patrimonio Histórico e INSPIRE



3. IDE Arqueológica

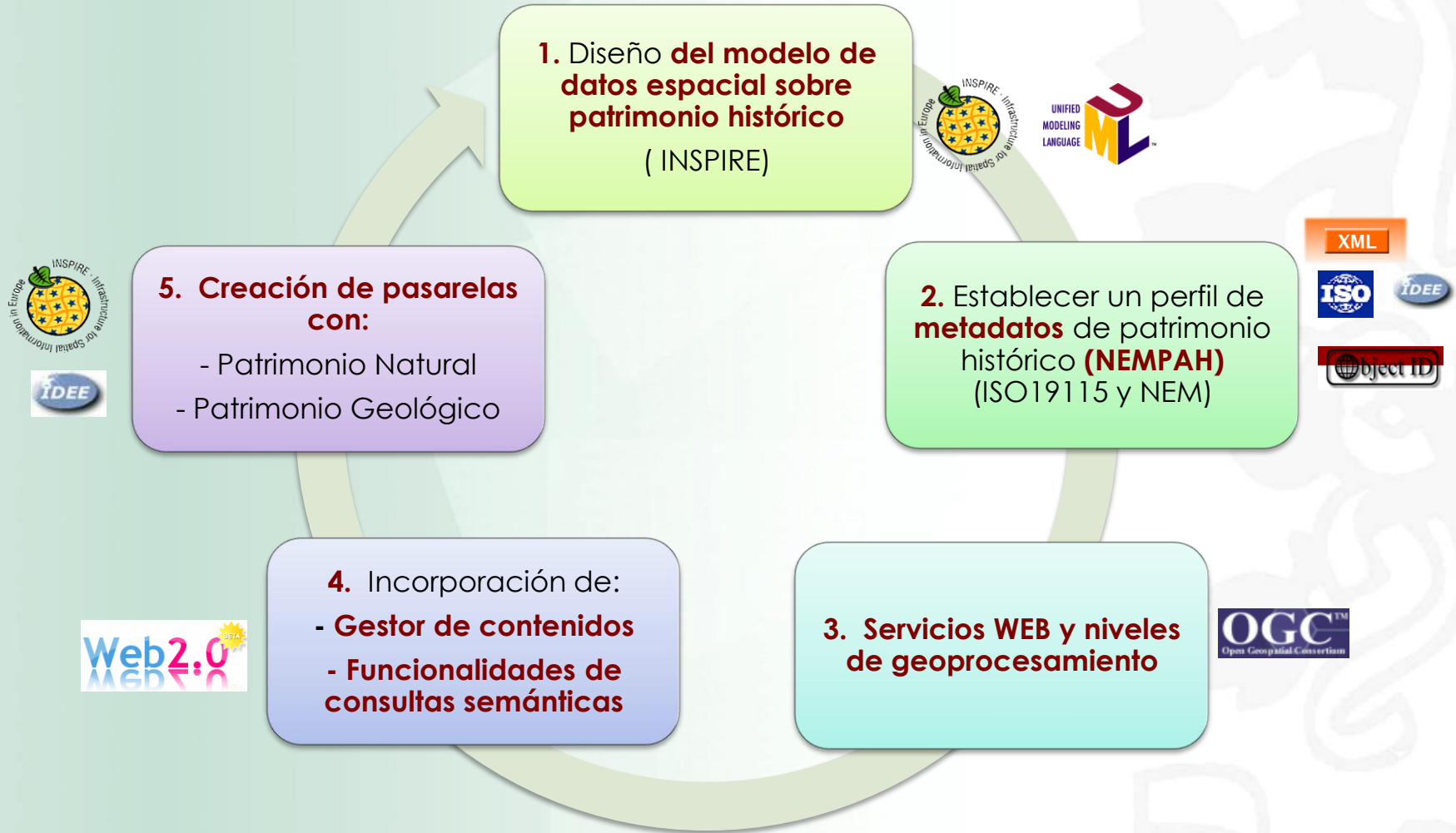


- **Las primeras iniciativas relevantes de IDE con datos arqueológicos en España están en el CSIC:** ARANO, IDEZAM, SILEX- Casa Montero
- **Gran cantidad de información arqueológica en B.D. para integrar la IDE patrimonio histórico, con datos de “referencia” a nivel nacional e internacional:**
 - B.D. cronología radio carbónica de la P.I. (Dataciones de Carbono-14)
 - Arqueometalurgia:
 - B.D. Isótopos de plomo de la Península Ibérica
 - B.D. micrografía de objetos de orfebrería pre y protohistórica de la P.I.
 - Atlas Arqueobotánico de la P.I.
 - Corpus de Arte Rupestre Levantino (Patrimonio de la Humanidad)
 - Etc.
- **Constitución nodo de patrimonio histórico en la IDEE**

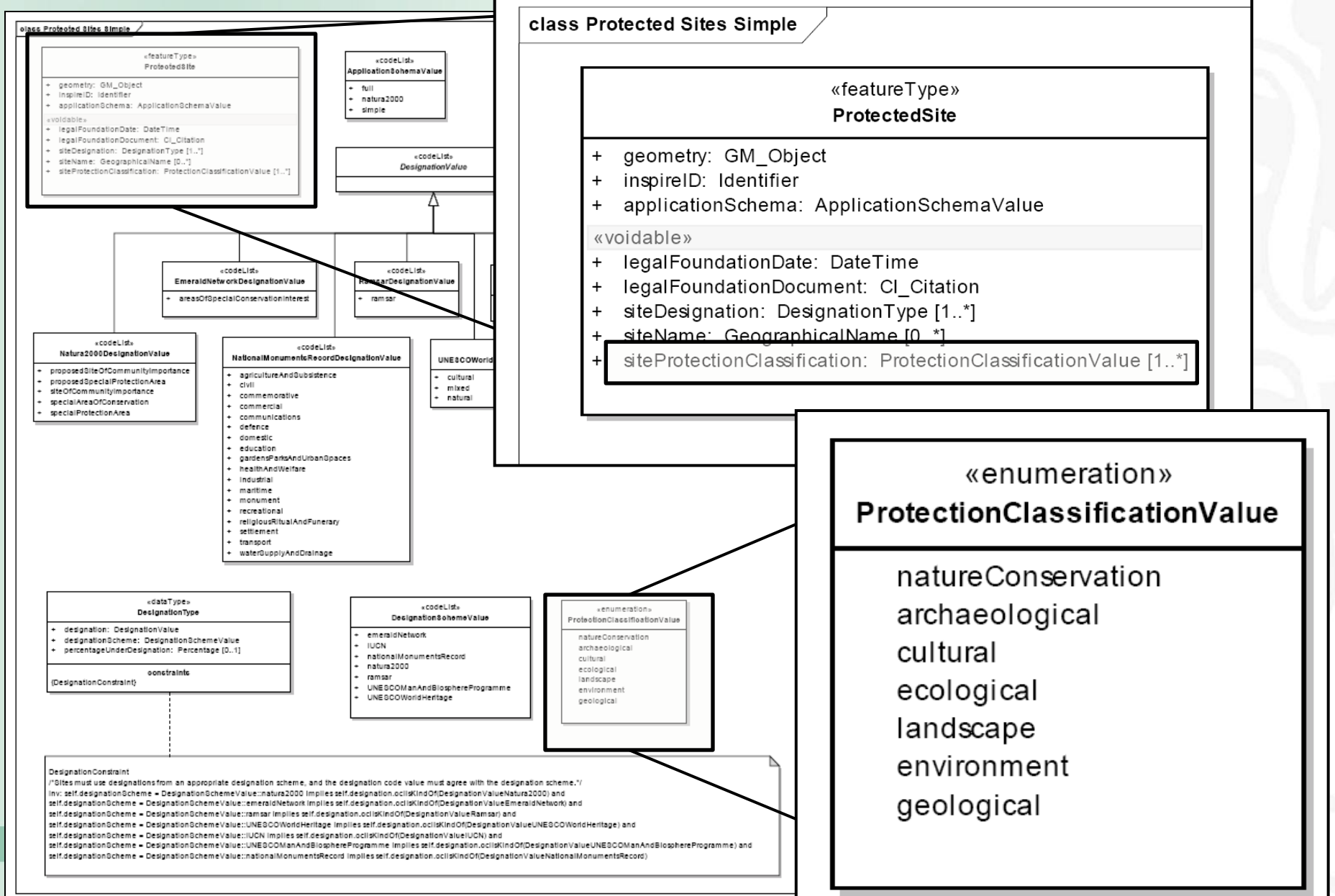
3. IDE Arqueológica



4. SGT-Patrimonio Histórico: Plan de Trabajo

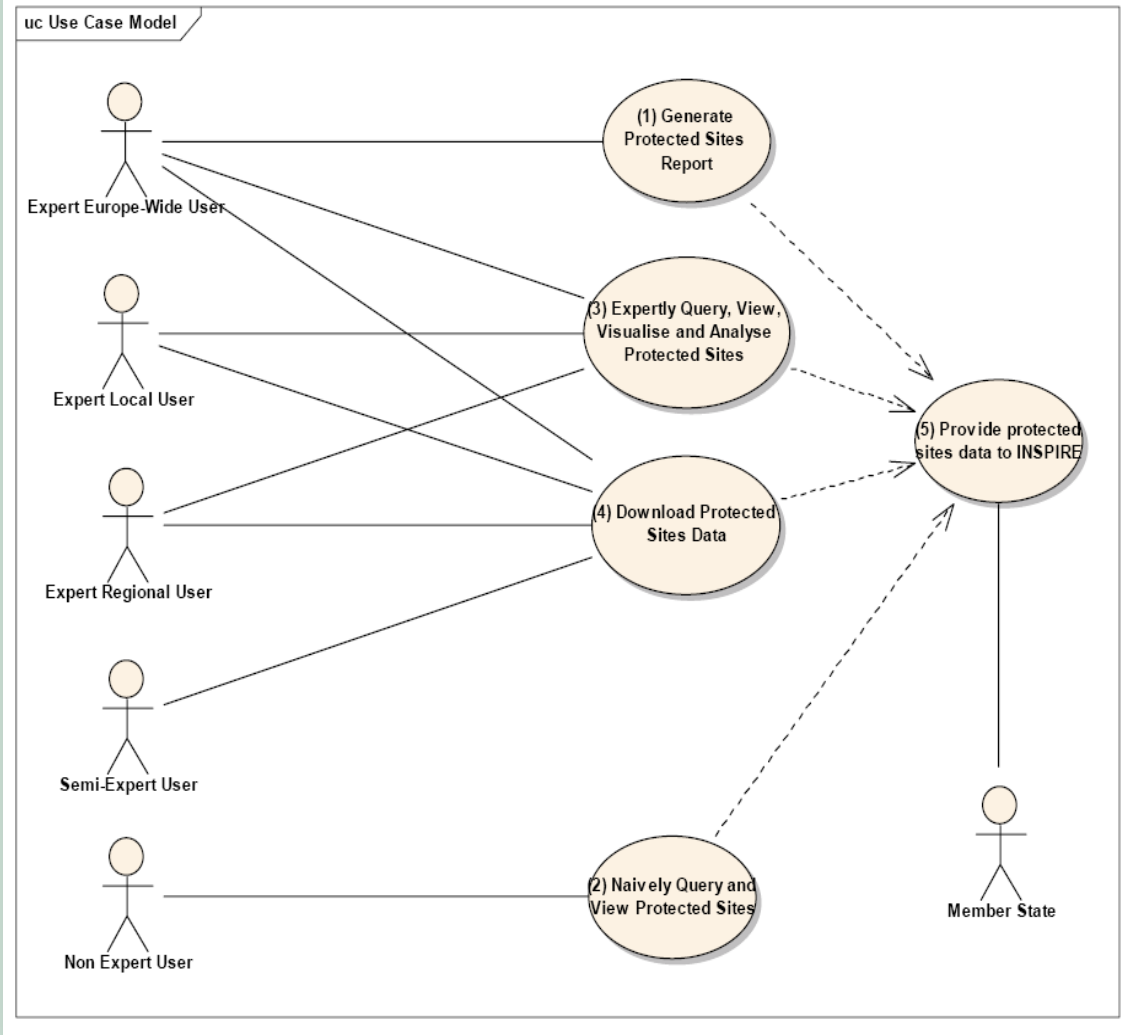


5. SGT-Patrimonio Histórico: ¿ Por dónde empezar?



6. SGT-Patrimonio Histórico: Conclusiones

UML use case diagram.



Permitirá desarrollar e implementar el documento 9: “**Lugares protegidos**” del Anexo I de INSPIRE

Tenemos las bases de datos de patrimonio histórico y un **proyecto sólido** y financiado .

Lo que deseamos es **desarrollarlo no sólo para INSPIRE, sino también para la IDEE**, dentro del GT-IDEA, a través de un subgrupo temático que pueda avanzar en las especificaciones para su correcta implementación.

Abierto: con la incorporación de especialistas en IG.



GRACIAS POR LA ATENCIÓN

Isabel del Bosque (isabel.delbosque@cchs.csic.es)

Unidad de Sistemas de Información Geográfica

Centro de Ciencias Humanas y Sociales (CCHS)

Consejo Superior de Investigaciones Científicas (CSIC)